

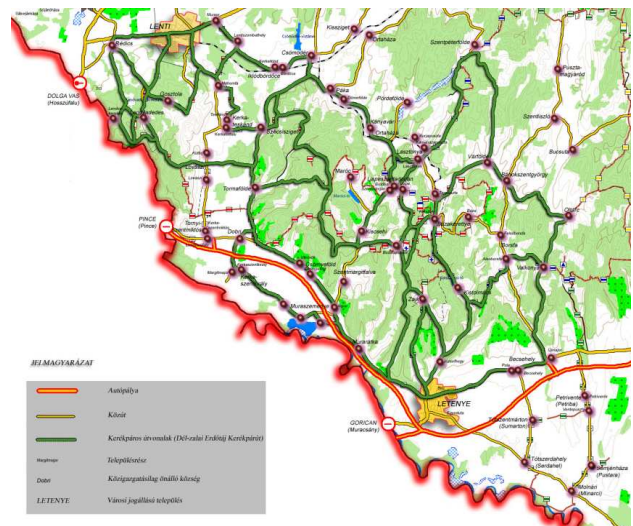
1st Best practice example – Hungary

“GPS based cycling touristic system”

Austria-Hungary INTERREG III/A 2004-2006 program AT-HU/06/01/137

Project description

The development of the Dél-zalai Erdőtáj Bicycle Path was implemented within the project, which was supported by the Austria-Hungary INTERREG III/A 2004-2006 program, on the basis of an Austrian example. The main objective of the project was to firstly implement in practice the GPS based cycling navigation in Hungary. As a result of the project, the existing cycling path network expanded by additional new paths, the circle of the presented sights and the partners cooperating in the system operation has been grown.



Project Partners:

- Cultural and Sport Association Of Lisszeszentadorján
- Naturpark in der Weinidylle
- Cycling Association of Kőszeg
- Téli Kistérség Sokoróaljai Önkormányzatainak Többcélú Társulása

Main objectives of the project

- Purchasing of 20 GPS devices, which can be rented for fee by the tourists from the strategic partners
- Assigning 27 new cycling paths (with total length of 1 169 km). Some of these paths are appropriate for families and kids, some of these are for the professional bikers and some of these are more difficult.
- Summary study about the local touristic attractions, which contains the touristically relevant natural and economical values of the country
- brochure and website, which summarizes the values of the Dél-zalai Erdőtáj Bicycle Path and the services of the bicycle touristic system
- Feasibility study, which presents the method of the GPS based cycling touristic system development



BOX OF ADVICE

- the quality of the touristic cycling opportunities can be significantly raised even by small scale investments
- adapting best practices can significantly decrease the cost of the developments

Source:

<http://www.del-zalai-erdotaj.hu/index.php?pg=dokumentumok>